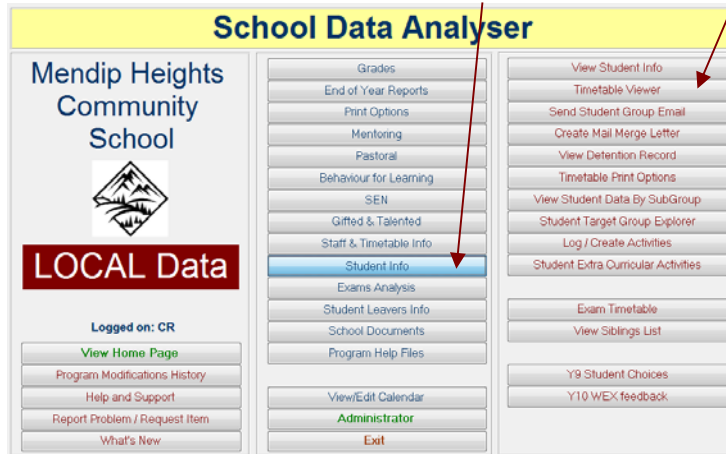


Compare student & staff timetables in School Data Analyser

1. You can easily compare student timetables to look for shared classes / lessons. This can be useful for tutors / year heads if e.g. there are issues when a particular group of students are together.

From the **Main Menu** screen, click on **Student Info** then **Timetable Viewer**:

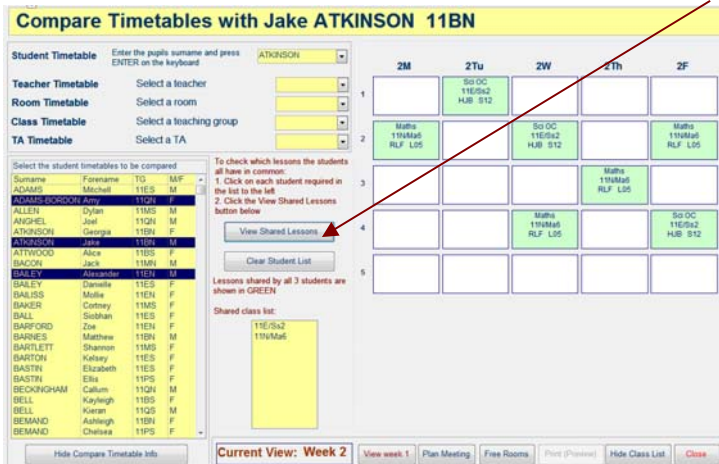


In **Timetable Viewer**, select a student and click OK to view their timetable:



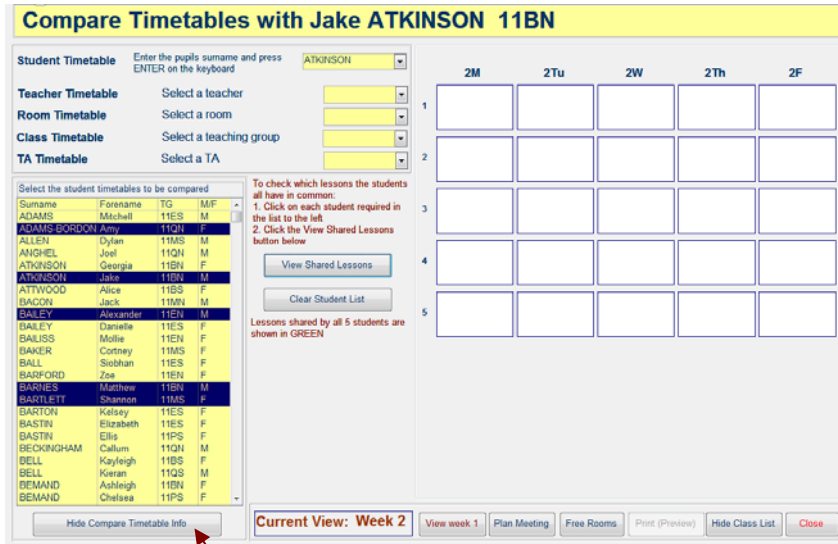
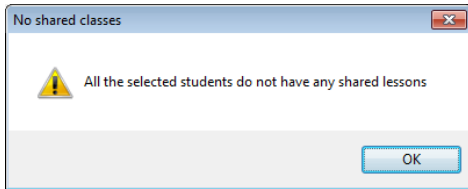
Now click the **Compare Timetables** button.

A list of students in the same year group appears with the chosen student already selected. Select additional students from the list then click the **View Shared Lessons** button.



Shared lessons are displayed in GREEN together with a list of shared classes.

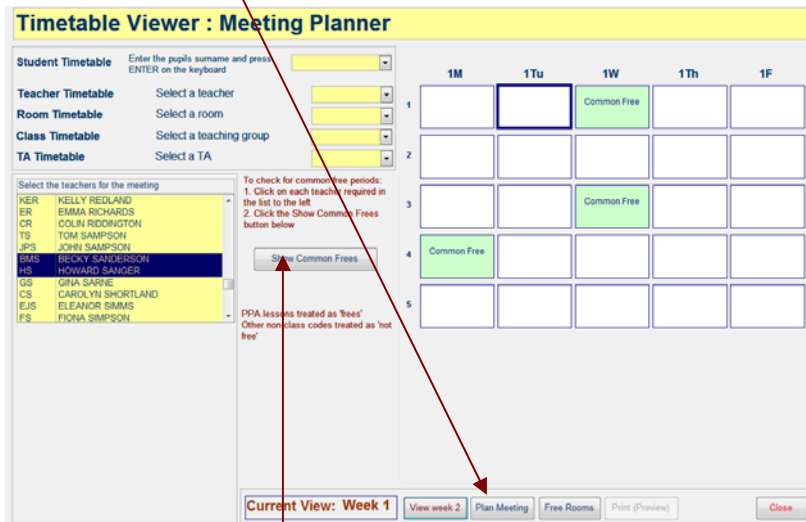
If all the students selected do not have any shared classes, this message appears:



Click the **Hide Compare Timetable Info** button to revert to the normal screen

- You can also use this form to plan possible meeting times for groups of teachers by checking which 'free periods' they have in common

Click the **Plan Meeting** button, then select 2 or more teachers from the list on the left



Click the **Show Common Frees** button to display these common 'free periods' in GREEN